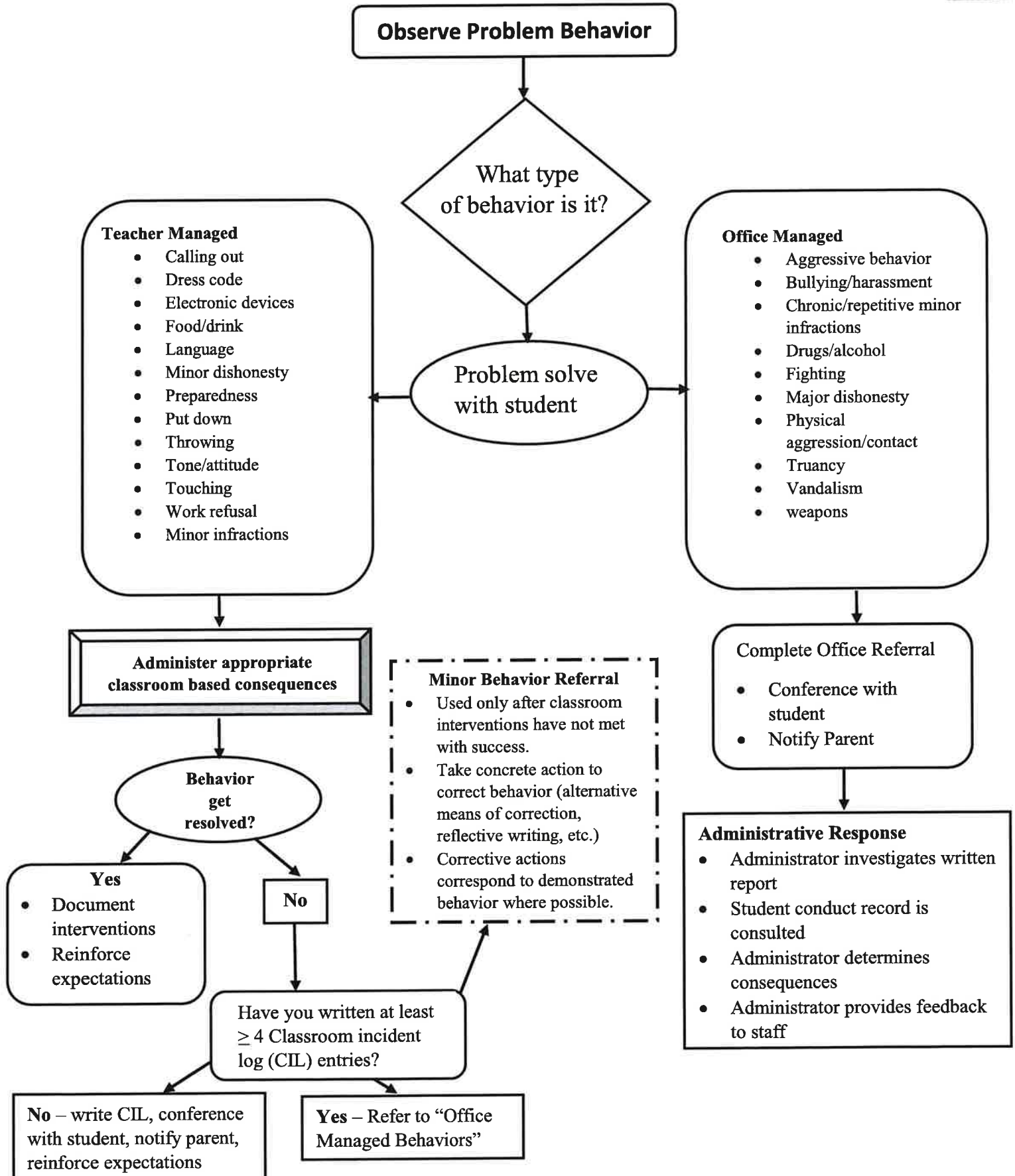


Levi Dickey Elementary Discipline Procedure Flow Chart



Levi H. Dickey Elementary School
Definitions of Minor and Major Problem Behaviors

Minor Problem Behavior	Definition
Defiance	Student engages in brief or low-intensity failure to follow directions or talks back
Disrespect	Student delivers low-intensity, socially rude or dismissive messages to adults or students
Horseplay	Student engages in non-serious, but inappropriate physical contact
Poor Peer Interactions	Student engages in behaviors that inhibit his/her ability to form positive relationships with peers
Inappropriate Language or Gestures	Student engages in low-intensity instance of inappropriate language or gestures not specifically directed to an individual
Impeding Peers' Learning	Student engages in low-intensity behaviors that irritate others, possibly including making noises, tapping, wandering, etc.
Misuse of Property	Student engages in low-intensity misuse of property, possibly including accidental breakage
Non-Compliance	Student fails to follow schoolwide location expectations
Untruthful	Student knowingly tells falsehoods that negatively impact others
Uncooperative	Student engages in low-intensity argumentation, delayed compliance with teacher directive, or other uncooperative but safe behavior
Technology Violation	Student engages in non-serious, but inappropriate (as defined by school) use of cell phone, smart watches, music/video players, camera, and or computer

Possible Function of Behavior	Definition
Gain Peer Attention	Student engages in problem behavior(s) to gain attention of peer(s)
Gain Adult Attention	Student engages in problem behavior(s) to gain attention of adult(s)
Gain/Obtain Item	Student engages in problem behavior(s) to get a specific item
Gain/Obtain Activity	Behavior is intended to gain the student a preferred activity
Avoid Peers	Student engages in problem behavior(s) to get away from/escape peer(s)
Avoid Adults	Student engages in problem behavior(s) to get away from/escape adult(s)
Avoid Seat Work	Student engages in behavior to avoid individual work
Avoid Group Work	Behavior is intended to get a student removed from a group activity
Avoid Scheduled Event	Behavior is intended to get a student out of a particular activity (ie. PE)

Levi H. Dickey Elementary School
Definitions of Minor and Major Problem Behaviors

Major Problem Behavior	Definition
Arson	Student plans and/or participates in malicious burning of property
Assault	Student engages in actions involving serious physical contact where injury may occur (eg. hitting, punching, hitting with an object, kicking, hair pulling, scratching, throwing items, etc.)
Bullying	The repeated delivery of direct or technology-based messages that involve intimidation, teasing, taunting, threats, or name calling
Committed Obscene Act	Student engages in actions that are obscene or sexual in nature
Controlled Substance	Student is in possession of or is using illegal substances, including vape pens and/or cartridges, drugs, alcohol or tobacco
Destruction of Property/Vandalism	Student participates in an activity that results in destruction or disfigurement of school or private property
Fighting	Student is involved in mutual participation in an incident involving physical violence
Harassment	The delivery of disrespectful messages in any format related to gender, ethnicity, sex, race, religion, disability, physical features, or other protected class
Profanity Towards Student or Staff	Student delivers verbal/written/electronic messages that include swearing, name calling, or obscene language directed at a particular individual
Theft	Student is in possession of or is responsible for removing someone else's property without permission
Threat	Student delivers a message of intent to inflict serious bodily injury to self or others, or intent to damage/destroy any school facility
Weapons	Student is in possession of a knife, gun (real or look alike), or other object readily capable of causing bodily harm

Action Taken	Definition
Contacted Parent/Guardian	Consequence for referral results in parent/guardian communication by phone, email, or person-to-person about the problem/incident
Counseled and Advised	Rules and consequences are reinforced with student
Conference Scheduled	Consequence for referral results in student meeting with administrator, teacher, and/or parent/guardian (in any combination)
Removed/Restricted Privilege or Activity	Consequence for referral results in student being unable to participate in some type of privilege or a period of time spent away from preferred activities during the school day
Assigned Time Out/Detention	Consequence for referral results in student spending time in a specified area away from scheduled activities/classes
Restitution/Community Service	Consequence for referral results in apologizing or compensating for loss, damage, or injury; community services
Suspension	Consequence for referral results in student being dismissed from school for one or more days